



Rizvi Education Society's
RIZVI COLLEGE
OF ARTS, SCIENCE & COMMERCE

RIZVI EDUCATION COMPLEX, SHERLY RAJAN ROAD OFF. CARTER ROAD, BANDRA (WEST), MUMBAI - 400050
Website: www.rizvicollege.edu.in/ Phone: 26480348/26004245 - Fax: 26497448

DEPARTMENT OF ZOOLOGY

DEPARTMENT OF ZOOLOGY

Unit 2: Marine shell fish of India

MRS. SABA SHADAB RAIS

Subject : Fishery Biology
TYBSc SEM VI

2.1 Crustacean fisheries

- i) Penaeus monodon (Giant tiger prawn)*
- ii) Penaeus indicus (Indian prawn)*
- iii) Metapenaeus affinis (Jinga shrimp)*
- iv) Parapenaeopsis stylifera (Kiddi shrimp)*
- v) Acetes indicus (Jawala paste shrimp)*
- vi) Panulirus polyphagus (Mud spiny lobster)*
- vii) Scylla serrata (Giant mud crab)*

Crustacean fisheries

- Crustaceans form a large, diverse arthropod taxon which includes such familiar animals as crabs, lobsters, crayfish, shrimps, prawns, krill, woodlice, and barnacles.
- They are distinguished from other groups of arthropods, such as insects, myriapods and chelicerates, by the possession of biramous (two-parted) limbs, and by their larval forms, such as the nauplius stage of branchiopods and copepods.

Penaeus monodon (Giant tiger prawn)



Penaeus monodon (Giant tiger prawn)

- *Penaeus monodon*, commonly known as the giant tiger prawn or Asian tiger shrimp (and also known by other common names), is a marine crustacean that is widely reared for food.
- **Biological features**
 - Females can reach about 33 cm (13 in) long, but are typically 25–30 cm long and weigh 200–320 g; males are slightly smaller at 20–25 cm long and weighing 100–170 g . Similar to all penaeid shrimp, the rostrum well developed and toothed dorsally and ventrally. The carapace and abdomen are transversely banded with alternative red and white. The antennae are grayish brown. Brown pereopods and pleopods are present with fringing setae in red.

Penaeus monodon (Giant tiger prawn)



Penaeus monodon (Giant tiger prawn)

- Distribution
- Its natural distribution is the Indo-Pacific, ranging from the eastern coast of Africa and the Arabian Peninsula, as far as Southeast Asia, the Pacific Ocean, and northern Australia. It is an invasive species in the northern waters of the Gulf of Mexico[4] and the Atlantic Ocean off the southern US.

Penaeus monodon (Giant tiger prawn)

- Habitat
- Giant tiger prawn are suited to inhabit a multitude of places. They mainly occur in Southeastern Asia, but are widely found. Juvenile *P. monodon* are generally found in sandy estuaries and mangroves. Once into adulthood the prawn move into deeper waters (0- 110 meters) and live on muddy or rocky bottoms. The black tiger prawn has shown to be nocturnal in the wild. They burrow into substrate during the day then come out at night to search for food and feed. *P. monodon* typically feed on detritus, polychaete worms, and small crustaceans. They also commence mating at night and can produce around 750,000 eggs.

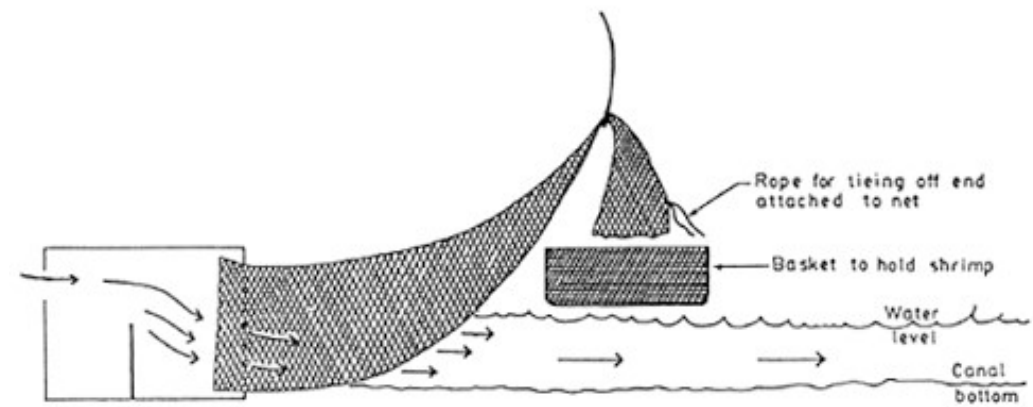
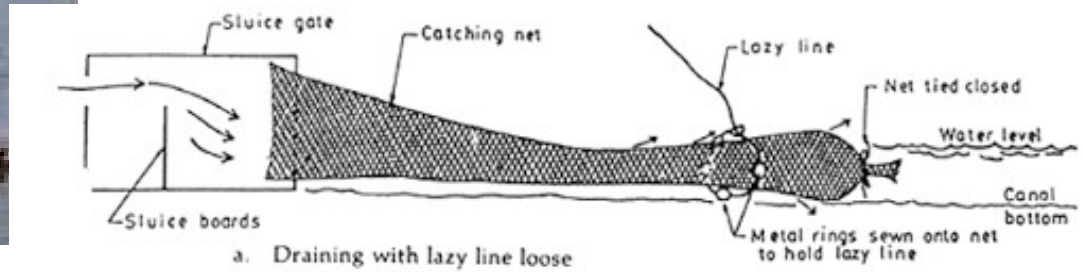
Penaeus monodon (Giant tiger prawn)

- Economic Importance:
 - *Penaeus monodon* is the second-most widely cultured prawn species in the world. In 2009, 770,000 tonnes were produced, with a total value of US\$3,650,000,000.[1] *P. monodon* makes up nearly fifty percent of cultured shrimp alone. The Tiger prawn is popular to culture because of its tolerance to salinity and very quick growth rate.
- Diseases
 - They are very vulnerable to fungal, viral, and bacterial infections. Diseases such as white-spot baculovirus and yellow-head virus have led to a great economic impact in shrimp industries around the globe. They can receive transmitted diseases from other crustaceans such as the Australian red claw crayfish (*Cherax quadricarinatus*). The Red claw crayfish is susceptible to the yellow head virus and has shown to transmit it to the Black tiger prawn in places like Thailand.

Penaeus monodon (Giant tiger prawn)

- Bamboo traps are traditionally used for the partial harvest of selected large shrimp in extensive culture. A bag net is used for Semi-intensive ponds.. Due to its burrowing habit, a drag net is not practical unless it is installed with electric shock gear to stimulate the shrimp to jump.

Penaeus monodon (Giant tiger prawn)



Penaeus indicus (Indian prawn)

- The Indian prawn (*Fenneropenaeus indicus*, formerly *Penaeus indicus*), is one of the major commercial prawn species of the world.
- *P. indicus* is known by many common names around the world, including Indian white prawn, Tugela prawn, white prawn, banana prawn, Indian banana prawn and red leg banana prawn etc.
- The Indian prawn is used for human consumption and is the subject of a sea fishery

Penaeus indicus (Indian prawn)



Penaeus indicus (Indian prawn)

- Characteristics

- Shrimp have an exoskeleton (the "shell") that is periodically shed during moulting to allow further growth. The thorax has a spine called the rostrum, one pair of eyes, two pairs of antennae, three pairs of maxillipeds for feeding and five pairs of walking legs. Each abdominal segment except the telson has a pair of fins called pleopods on the ventral side. Shrimp use the pleopods for forward swimming and the telson and pleopods to propel backwards rapidly when the abdomen is flexed. The maximum carapace length is 56 mm.
- The body is semi-translucent, with olive green to grey-blue speckles. The pereopods are generally the same colour as the body. Pleopods are pink or red and the distal part of the uropods green or red, with the fringe of setae usually red. Juveniles are whitish, with specks of the same colour as adults
- The carapace is hairless. The rostrum is slender and long, with 7 to 9 teeth on the dorsal and 4 to 6 teeth on the ventral margin, with the blade of rostrum becoming moderately high in large specimens. Males are identified by a petasma. Females have a closed thelycum.

Penaeus indicus (Indian prawn)

- Distribution
 - *Penaeus indicus* is found from the Indo-West Pacific: East and South East Africa to South China, Papua New Guinea and North Australia
- Habitat
 - *F. indicus* is a marine decapod with estuarine juveniles. It prefers mud or sandy mud at depths of 2–90 metres. It grows to 22.8 centimetres and has a life span of 18 months. After hatching, free-swimming nauplii are obtained, which further passes through protozoa, mysis and then to postlarval stage, which resembles the adult prawn. The postlarvae migrate to the estuaries, feed and grow until they attain a length of 110–120 mm, and these sub adults return to the sea and get recruited into fishery. It is also commonly used in shrimp farming.

Penaeus indicus (Indian prawn)

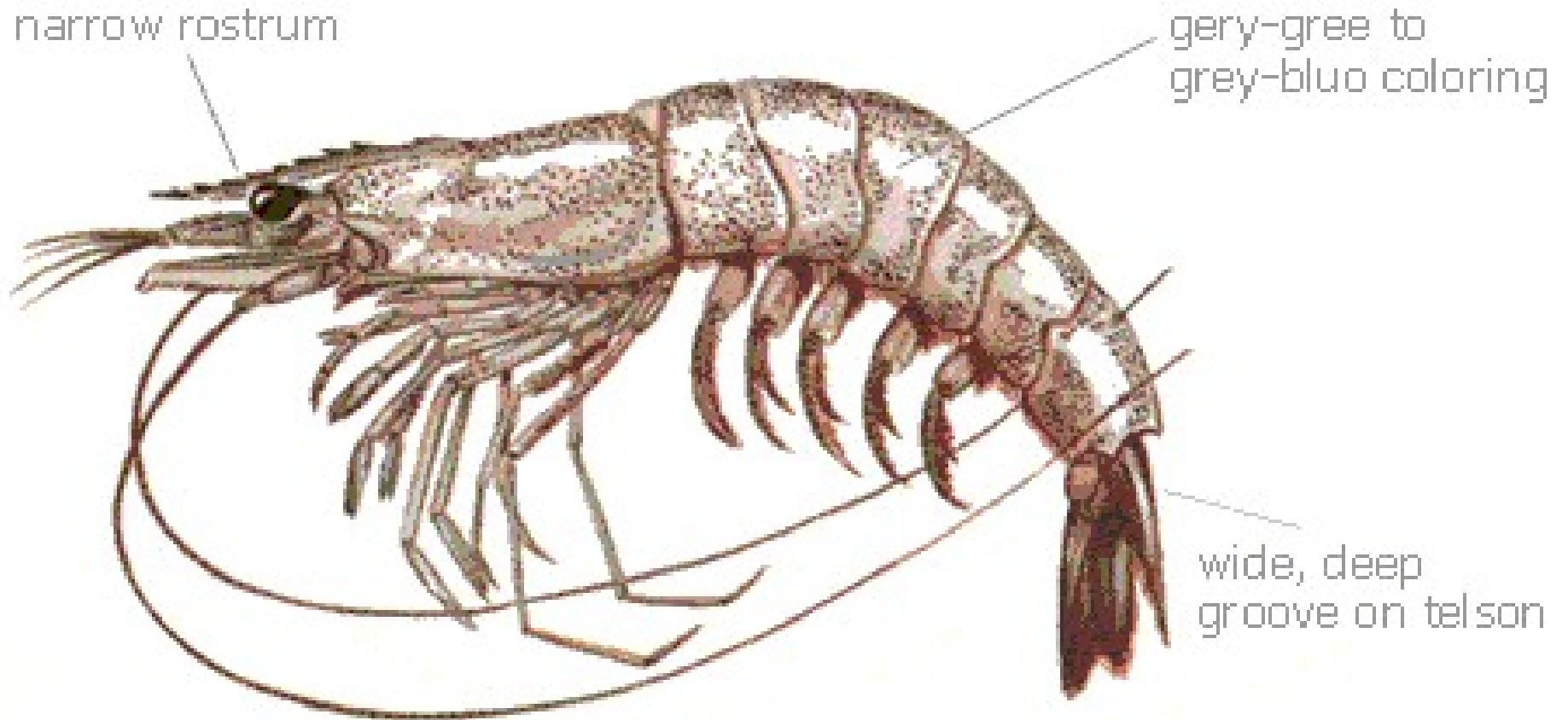
- In traditional farming harvesting is done by fitting conical nets on the sluice gates and opening them during low tide. The shrimp are trapped in the net as the water recedes. The remaining shrimp are harvested by cast netting. In semi-intensive and intensive practices, harvesting is done by complete draining of the pond. The rest of the shrimp are collected by hand.

Metapenaeus affinis (Jinga shrimp)

- *M. affinis* forms about 12% of all India marine prawn landing
- In Mumbai, on the northwest coast locally known as the Jinga shrimp.



Metapenaeus affinis (Jinga shrimp)



■ **Metapenaeus Affinis**

Mrs Saba Shadab Rais

Metapenaeus affinis (Jinga shrimp)

- Characteristics

- Narrow rostrum curved with nine or more dorsal teeth. Eyes very large. strong spines on bases of chelipods, no exopods on fifth pair of walking legs. Fecundity is 88,000 to 3,63,000 eggs
- Colour: Bluish – green over a translucent body.
- Size: At maturity time the length of the brown shrimp is estimated to be around 11.9 centimetres. Though in certain cases the length has been seen to reach a maximum level of 22 centimetres. Common average lengths for both males and females are mentioned to be around 17 centimetres at the outset.

Metapenaeus affinis (Jinga shrimp)

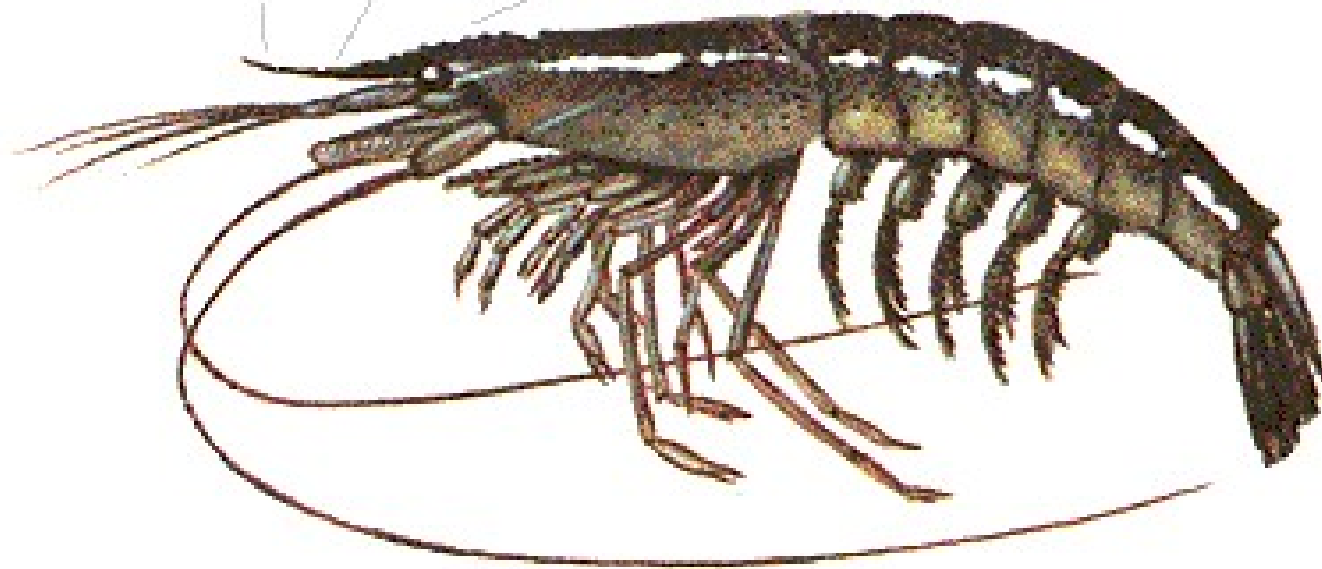
- Distribution: Indo-West Pacific: Arabian Sea to the Malay Archipelago and Hong Kong.
- Habitat: Depth 5 to 92 m. Bottom mud. Marine.
- Crafts & Gears
 - In Mumbai 'dot net' or bag net is used. Other regions drag nets and cast nets are employed. Powered boats use shrimps trawls of various sizes.
 - In inshore fishing dugout canoes and plakbuilt boats with out-rigger are used. Powered fishing vessel of 7-11 m Pablo boats are also used.

Parapenaeopsis stylifera (Kiddi shrimp)

long, strongly upcurved rostrum

front part toothless

rostrum and crest darker



■ *Parapenaeopsis Stylifera*

Parapenaeopsis stylifera (Kiddi shrimp)

- Characteristics
- Long sigmoid rostrum with a proximal crest bearing 5-6 teeth strongly upcurved. Latter part of the body greenish brown, sides and appendages scarlet.
- The male is distinguished from the female by its smaller size and bright colour. Males attain maturity at 65 mm and female at 75 mm. *P. stylifera* is promiscus. Mating occur throughout the year. Fertilization is external, at the time of egg-laying. The species produces an average of 39,500 eggs at 70 mm and 2,36,000 eggs at 120 mm total length.

Parapenaeopsis stylifera (Kiddi shrimp)

- Distribution
 - On the west coast of India, the species is most abundant from Veraval to the Trivandrum, but moderately available in Sind, Mekran and Kutch areas. It occurs all round on west coast.
- Habit and Habitat
 - *Parapenaeopsis stylifera* does not enter the estuaries and backwaters but in the sea it appears to perform migratory movements to and from the coast. The shoreward movement commence in October. Towards the end of May, after commencement of southwest monsoon, the prawns begin to move into deeper waters.

Parapenaeopsis stylifera (Kiddi shrimp)

- **Crafts and Gears**

- In Mumbai, various sizes of bag net are used for catching prawns, these are made of either cotton yarn or hemp. On North Kanara coast, the prawns are caught by shore seine. On the southwest coast of India, various types of boat seines, shore seines, drag net is used. Although indigenous gear is still employed for prawn fishing, the main gear for catching prawns at present is trawl. Echo sounding is used in some of the bigger commercial and Government owned vessels for bottom fishes and prawns.
- The indigenous gears are mainly operated by dug out canoes and plankbuilt boats with out-rigger. The mechanized fishing vessels are generally 7-11 m Pblo boats, having 10-30 b.h.p. engines. At present mechanized fishing vessels are widely used and there are about 5000 mechanised fishing boats in India.